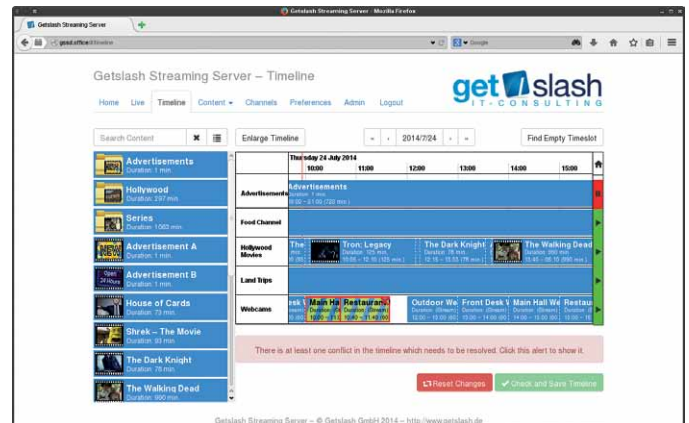


DATASHEET GSSD

The Getslash Streaming Daemon (GSSD) is a high performance, multi-channel multicast streaming solution for movies and other multimedia sources. A full-featured HTML5 front end ensures cross platform and comfortable management of content, streams and multicast channels. The existing REST API enables easy integration into existing projects. Overall, it is a complete, multi-purpose, easy-to-use multicast streaming solution.

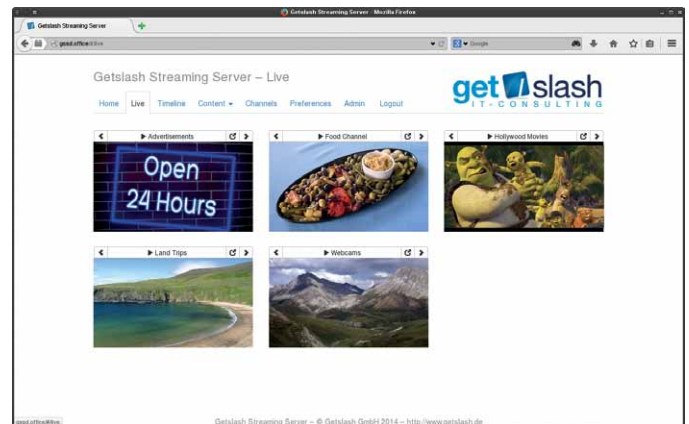
TIMELINE

The timeline editor offers very easy playout management by using drag & drop to add and organize movies, containers and streams. Streaming slots can be moved across channels and conflicts are automatically detected and displayed. The timeline view is zoomable and slots can be edited in detail. Find the next free air time of a channel with just one button click.



LIVE VIEW

The live view gives an overview of the currently running channels. Using a browser plugin the real time multicast video streams are presented just as your end points will receive them. For even more control one channel can be displayed permanently as a popup while working on the timeline or channels. Also full screen playback is supported.



Don't hesitate to contact me for further information!

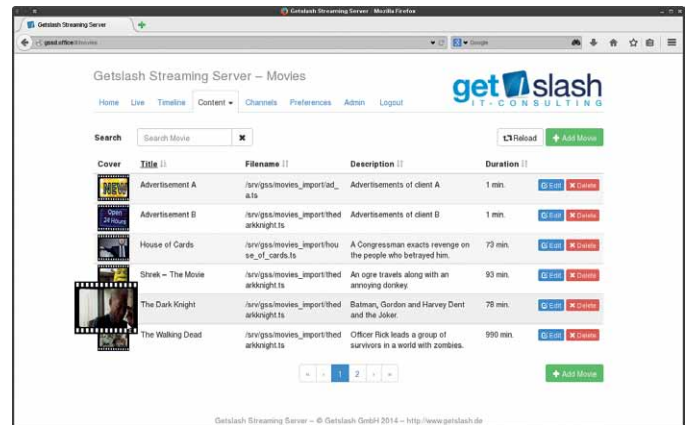


get slash
IT - CONSULTING

Your contact: Andre Peitz | Getslash GmbH
Bahnhofstraße 16 | 59302 Oelde
Fon +49 (2522) 834349-9 | Fax +49 (2522) 834349-1
andre.peitz@getslash.de | <http://www.getslash.de>

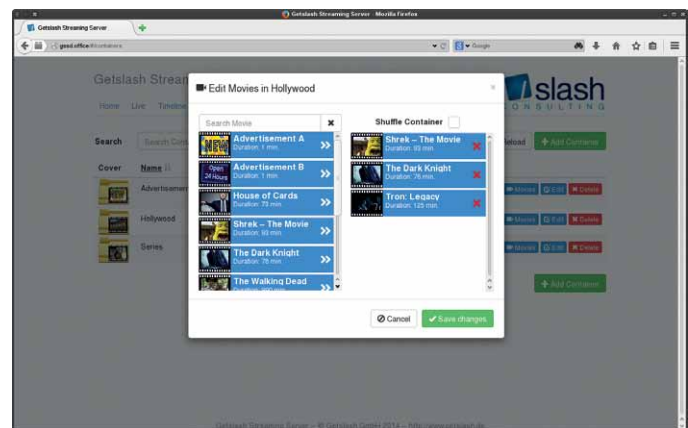
CONTENT

Content like movies or audio files can be imported and managed directly via the web front end. The comfortable list view includes sorting, searching and preview images for each entry. For a well organized library every item has a custom cover, a name and a description field which is included in the search as well. Media is imported in background which enables you to continue with other tasks.



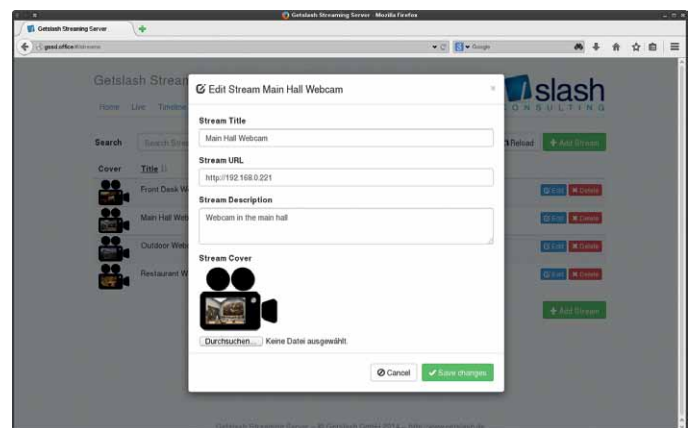
CONTAINERS

Movies can be grouped in containers which behave like play lists. The items can be played by the original order or randomly. Containers are very useful for reoccurring sets of movies like advertisements or welcoming new guests every time a journey starts.



STREAMING

The input is not limited to movies only, sources like HTTP, RTSP, DVB-C, DVB-S, DVB-T and UDP streams can be added to the content library. They behave the same way as containers or movies and can be managed in the timeline. Due to the modular design of the GSSD new sources can be implemented on customer request.

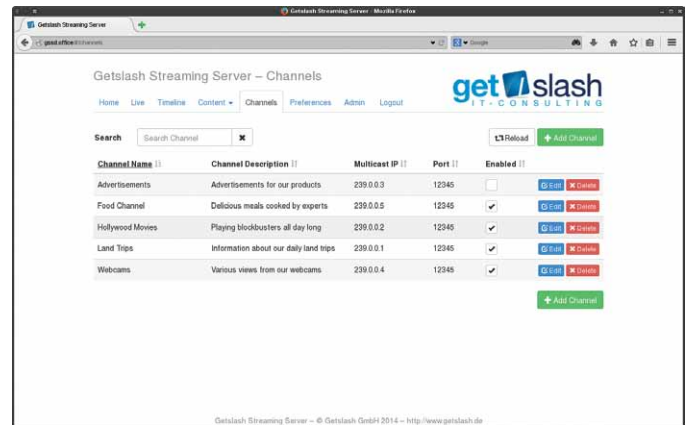


Create your own
Live TV Channels in
your environment!



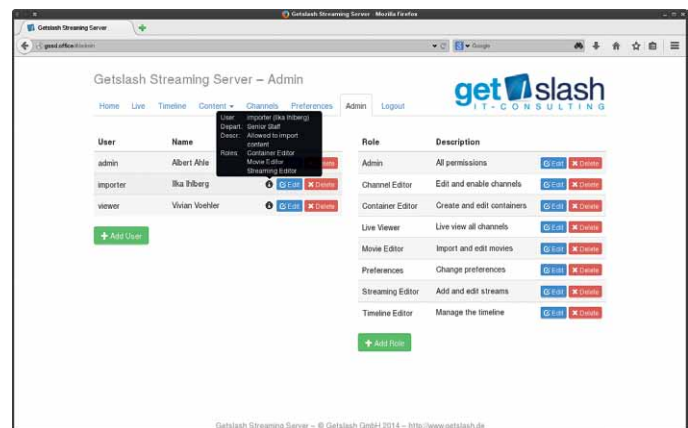
CHANNELS

The output multicast channels are configured right from the front end. Define IP address and port for a channel and it will instantly start to play. Channels can be disabled for maintenance. The GSSD has been tested with over 50 parallel channels.



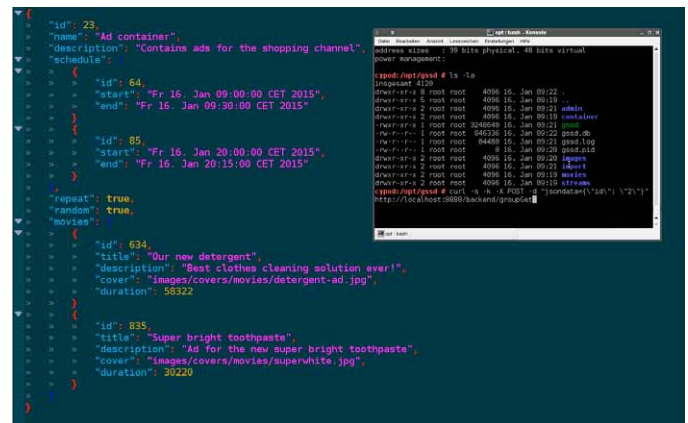
ROLE MANAGEMENT

The streaming solution comes with fine grained user and role management (RBAC). Permissions can be organized in roles, each user has a set of roles that exactly define which functions of the GSSD can be used and what the user will see in the front end. Roles can be combined for even more comfort.



REST API

Use the complete and powerful REST API to script GSSD server functionality and control the daemon from your own applications. With JSON as exchange format and a standard HTTP(S) REST interface this can be done easily and quickly using available libraries in a variety of programming languages.



Promote your special offers to your customers!



FEATURE MATRIX

Supported Platforms ■ Virtual appliance via KVM / VMWare or delivery as hardware appliance

Minimum Requirements ■ 10GB HDD (incl. OS), 4GB RAM, Gigabit Ethernet
■ CPU depending on number of parallel streams
■ Additional storage for content (NFS, CIFS)

GSSD Daemon Details ■ High performance multi-threaded streaming server application
■ High performance multicast MPEG-TS streaming
■ Supporting 50+ parallel streams depending on hardware

Available Modules ■ Video streaming (stream video files)
■ Audio streaming (stream audio files)
■ Webcams and other live streaming sources
■ Video container (combine videos for ordered or randomized playing)
■ Easily extendable due to modular design and dynamic module loading

Administration ■ Cross platform, cross browser web interface
■ Newest HTML5 technology ensures application-like user experience
■ Most features are accessible with mobile devices like tablets
■ Advanced user and role management with permissions (RBAC)
■ Customize web front end using preferences
■ REST API for scripting support, control GSSD from your application

Channels and Timeline ■ Create multicast channels for planned streaming
■ Temporarily enable and disable channels
■ Seamless streaming of videos due to live content remuxing
■ Easy-to-use drag & drop management of timeline for streams
■ Automatic detection of conflicting slots in timeline
■ Live in-browser monitoring of current streams

Supported File Formats ■ Matroska (mkv)
■ MPEG Transport Stream (ts)
■ MPEG Program Stream (mpg)
■ MPEG-4 (14496-12 and -14, mp4)
■ Audio Video Interleave (avi)

Supported Video Codecs ■ MPEG-1
■ MPEG-2 Part 2
■ MPEG-4 ASP
■ H.264

Supported Audio Codecs ■ MPEG-1 Layers I, II, III
■ MPEG-2/4 AAC
■ AC3
■ DTS

Take advantage of
the flexibility of
the GSSD!



get slash
IT - CONSULTING

Your contact: Andre Peitz | Getslash GmbH
Bahnhofstraße 16 | 59302 Oelde
Fon +49 (2522) 834349-9 | Fax +49 (2522) 834349-1
andre.peitz@getslash.de | <http://www.getslash.de>